

## Fast Flow Systems Installed in Massive Brisbane Project



The integrated mixed-use development at 300 George Street consists of Retail, Five Star Hotel, an A-Grade Office Tower and a high quality Residential Tower. The design of the retail and hotel portions was developed by DBI Design Pty Ltd, while Zenx Architects was appointed to lead the design of the office and residential component of the project.

This mixed-use complex requires a carefully tailored solution for its rainwater management system. The development utilizing both Fast Flow Siphonic and Pressurised systems. Each of the two towers is well equipped with Primo 50™ rainwater outlets to drain a total roof area of 2,690 sqm. The residential tower is served by 3 numbers of psStack™ (Ø75 mm) draining 76 floors of balconies maximizing the usage of the psVent™ (Fast Flow's patented anti-backflow junction).

Beavis & Bartels started the installation of Fast Flow Siphonic system in the 42-storey of prime office tower in March 2018. And in the last week of July, the company started conducting the installation of rainwater management system for the residential tower. Overall, Fast Flow's systems drained a total catchment area of 3,470 sqm for this massive development.

### Inside this issue...

- Fast Flow Systems Installed in Massive Brisbane Project
- Fast Flow Systems Awarded SGBP Certification
- Introducing the Piccolo 50 RC

- Project Highlights
- Our Presence



## Fast Flow Awarded SGBP Certification



Fast Flow is humbled to have received the Singapore Green Building Product (SGBP) certification from the Singapore Green Building Council (SGBC) at the SGBC Gala Dinner on 6<sup>th</sup> September 2018. The SGBC Gala Dinner 2018 played host to more than 650 guests from the building and construction industry. The Finalists of the WorldGBC Asia Pacific Leadership Awards in Green Building were also honoured during this highly anticipated annual event.

This SGBP certification differentiates Fast Flow's products as the green choice of rainwater management products and systems for the construction industry. The certification scheme is a key initiative to drive the building industry towards sustainability and developing environmentally-friendly buildings. It provides consumers, building industry stakeholders, and government procurement systems with an excellent listing of robustly assessed and certified green building products.

In the SGBP certification, Fast Flow has attained 3 ticks for the Siphonic System and Pressurised System including both systems' products such as Primo™, Piccolo™, Artec™, Parco™, SLR™, psOutlet™, psVent™, psPipe™ and psFittings™. The certification is a testament to Fast Flow's relentless pursuit of environmentally friendly practices in manufacturing, energy saving and quality control. Fast Flow continues to strive towards being a world-class environmentally friendly rainwater management system provider in the industry.

## Fast Flow Introduces the Piccolo 50 RC



We are pleased to announce the release of a significant product enhancement for our customers - "Piccolo 50 RC". The Piccolo 50 RC is a newly designed version of Piccolo series that has a ceramic coated air baffle and well equipped with a clamping ring upturn (Type A) which provides excellent waterproofing interface details to serve the RC roof application.

Fast Flow has spent a significant amount of time and energy researching the proper material to be used in order to meet the stringent demands of the construction industry. We are highly confident that Piccolo 50 RC will be incredibly well received by our customers as we continue to offer the premier rainwater management solution to the building construction industry today.

The product is available for orders and will be replacing the function of Arteco-R™.



## Fast Flow Newly Secured Projects

### Australia



Project name: North Queensland Stadium  
Catchment area: 18,311 sqm

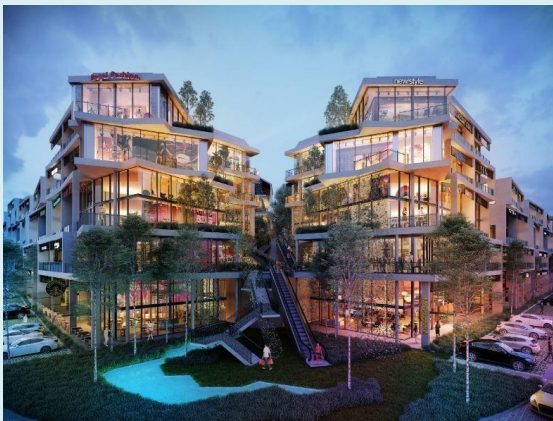


Project name: BCC Ferry Terminal  
Catchment area: 504 sqm



Project name: 300 George Street (Residential Tower)  
Catchment area: 1,200 sqm

### Malaysia



Project name: Tamarind SQ Phase Three  
Catchment area: 847 sqm

### Singapore



Project name: Data Centre at Jurong West (Phase 2)  
Catchment area: 5,217 sqm



Project name: PSA Liveable City  
Catchment area: 5,810 sqm



**Fast Flow (Thailand) Co. Ltd**

Nutri Building, 3rd Floor,  
46 Soi Pattanakarn, 20  
Suan Luang Bangkok  
Thailand 10250  
T: +66 2 369 3240-4  
F: +66 2 369 3245

**Fast Flow Malaysia Sdn Bhd**

No. 16, Jalan 15/22,  
Taman Perindustrian Tiong Nam  
40200 Shah Alam, Selangor  
Malaysia  
T: +603 5524 7022  
F: +603 5524 7122

**Fast Flow Malaysia Sdn Bhd (Kota Kinabalu)**

Block B, Unit No.3, 2<sup>nd</sup> Floor Intermediate Unit  
Jalan Lintas  
88300 Kota Kinabalu  
Malaysia  
T: +60 88 382 222

**Fast Flow Singapore Pte Ltd**

No 1 Fifth Avenue,  
#04-04 Guthrie House  
Singapore 268802  
T: +65 65004650  
F: +65 6500 4665

**Fast Flow Systems Australia Pty Ltd**

Unit 12/9-11  
Redcliffe Gardens Drive  
Clontarf  
Queensland 4019  
Australia  
T: +61 1300 801855

Above information does not include the addresses of our licensed distributors, please contact us at [communications@fastflowgroup.com](mailto:communications@fastflowgroup.com) for further information regarding our distributors in China, Indonesia, Taiwan, Japan and Turkey.